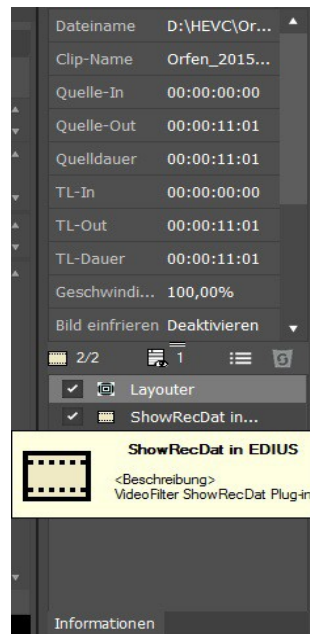


Install

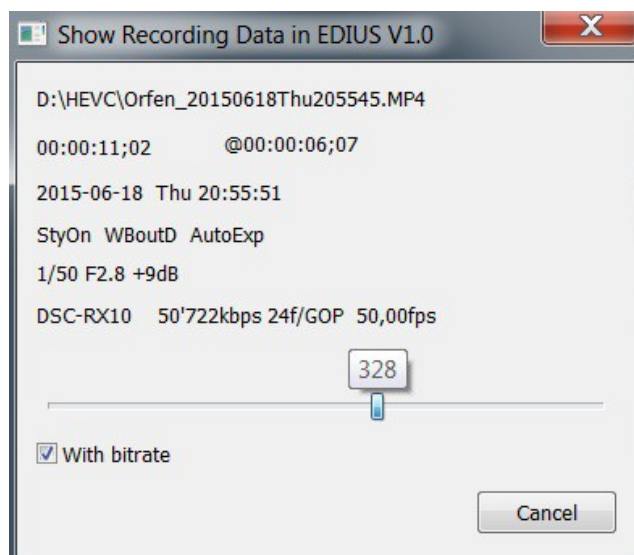
Just copy the *ShowRecDat.tpi* from the .zip file into the default plug-in path of EDIUS which is normally : *C:\Program Files\Grass Valley\EDIUS 8\PlugIn*. That's it.

Use

Apply the new ShowRecDat as a video filter to your clip as usual. Doubleclick the video part of your clip to select it. Now you can activate the property window of ShowRecDat by a double click on the filter in the information window:

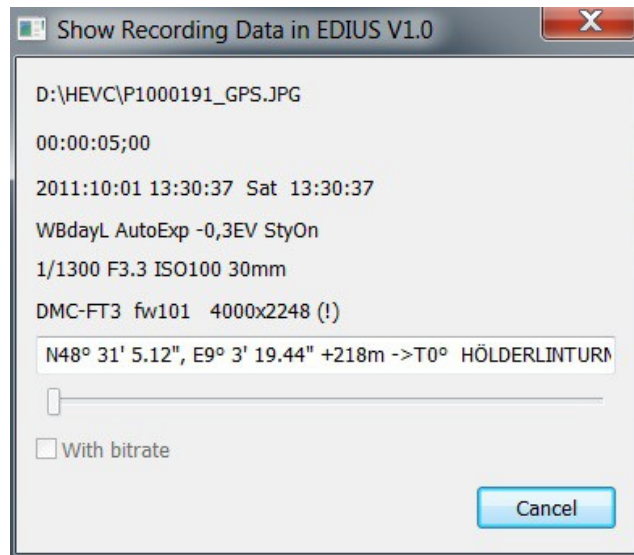


This will open the ShowRecDat dialog window.



Enable the checkbox 'With bitrate' to see the related data and use the slider to select the location in the clip. The current frame offset to the begin of the clip is shown when changing the slider position. On top the active clip length an offset (@) are displayed. Bitrate and position selection are supported for AVCHD and XAVC-S files with data in the video clip, not for UHD *.MOV files.

With *.JPG files as a selected clip the ShowRecDat Dialog looks like shown below if GPS data are contained in the file:



The (!) right to the picture size (here 4000x2248) indicates that the picture size is not exactly in the ratio of the project settings.

The GPS data are displayed in an edit control to allow copy and paste of this text to be used as an entry for Google Maps search. On the very right additional information of the picture content is shown.